



PN 16/25

KAT-A 1943

### Product characteristics and benefits

- Double function air valve
- Single chamber air valve in compact design
- For domestic water supply
- Venting function:
  - Small orifice to release low quantities of air during operation under pressure
  - Small orifice to vent low quantities of air
- For discharge of small quantities of air
- For venting of small quantities of air
- With female thread for easy screwing onto the pipeline
- Outlet female threaded acc. to DIN ISO 228 G ¾", G 1", G 1 ¼"
- Minimum operation pressure: 0.5 bar

### Materials

- Body: Ductile iron EN-GJS-400-15 (GGG-40)
- Bonnet: Ductile iron EN-GJS-400-15 (GGG-40)
- Bonnet bolts: Stainless steel A2 (DIN EN ISO 3506)
- Float: Plastic polypropylene
- Sealing: NBR

### Corrosion protection

- Internally and externally epoxy coated acc. to GSK guidelines

### Versions

- Standard version as described
- With ball valve
- Flanged versions of sizes DN 25, 32, 40 & 50 on request

### Field of application

- Chamber installation
- Installation in plants

### Tests and approvals

- Final inspection test according to EN 12266-1 (leakage rate A)

Without ball valve



With ball valve



### Note

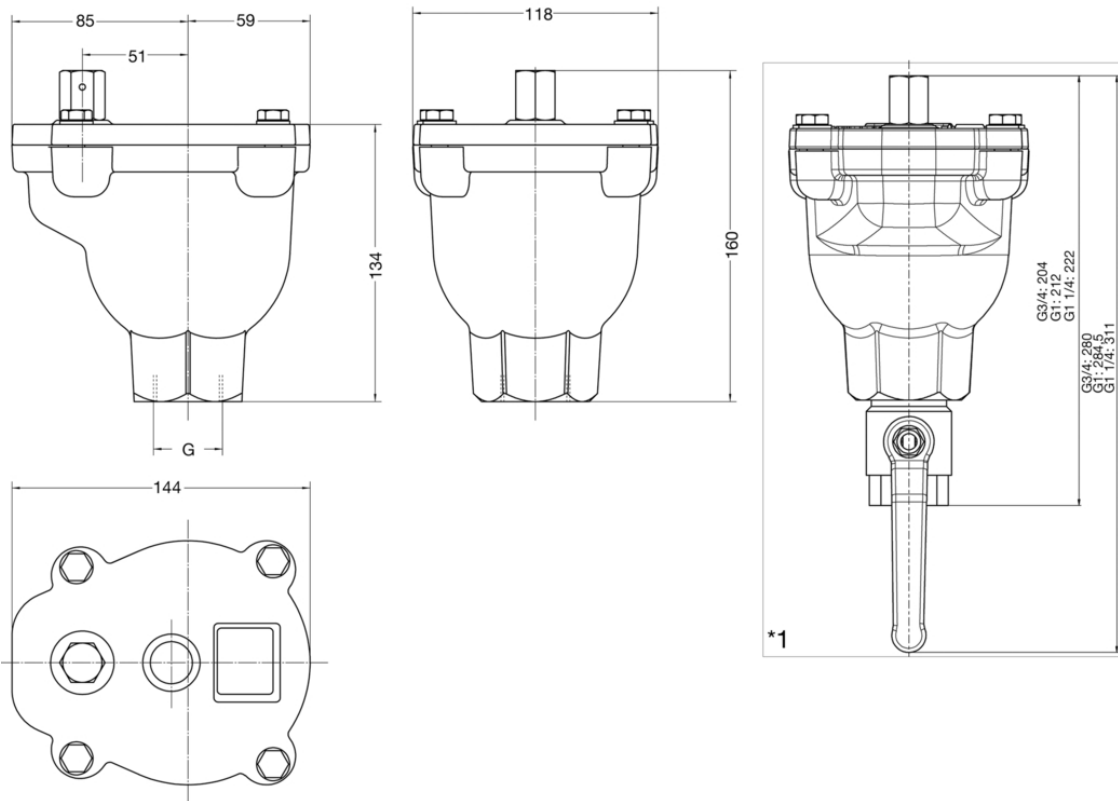
For proper installation and safe operation please follow the installation and operation instructions:  
KAT-B 1943

### Field of application

| PN | Maximum operating pressure [bar] | Maximum operating temperature for neutral liquids [°C] |
|----|----------------------------------|--|
| 25 | 25                               | 50   |
| 16 | 16                               | 50   |



### Drawing



\*1: Ball valve as an option (not included in standard version)

### Technical data

#### PN 16

| G Screw connection [inch]                           | 1"    | 1 1/4" | 3/4"  |
|---|-------|--------|-------|
| Weight without ball valve approx. [kg]              | 4.5   | 4.5    | 4.5   |
| Volume without ball valve approx. [m <sup>3</sup> ] | 0.003 | 0.003  | 0.003 |

Flanged versions of sizes DN 25, 32, 40 & 50 on request

#### PN 25

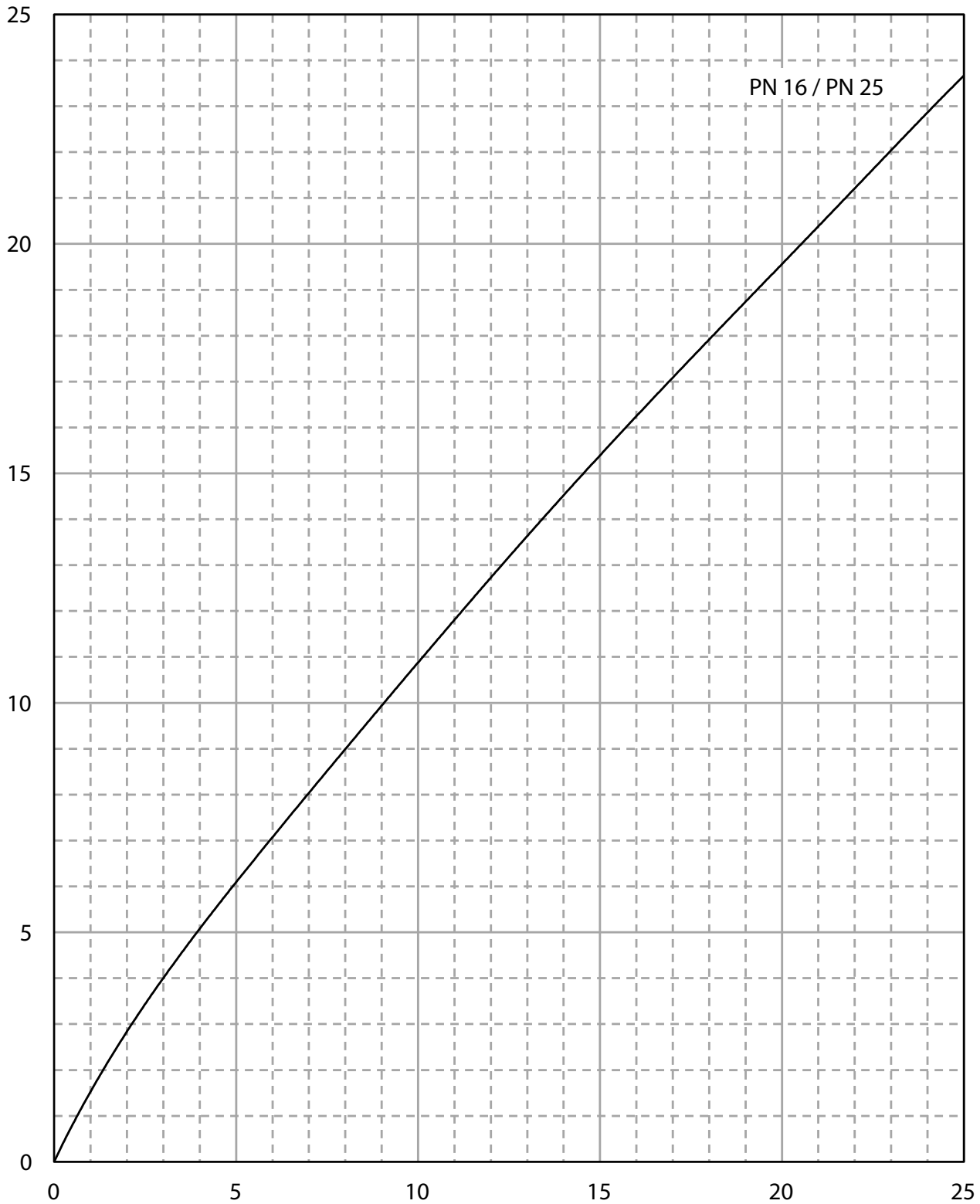
| G Screw connection [inch]                           | 1"    | 1 1/4" | 3/4"  |
|---|-------|--------|-------|
| Weight without ball valve approx. [kg]              | 4.5   | 4.5    | 4.5   |
| Volume without ball valve approx. [m <sup>3</sup> ] | 0.003 | 0.003  | 0.003 |

Flanged versions of sizes DN 25, 32, 40 & 50 on request



## Further information

## Rate of air release at full internal operating pressure



x: Operating pressure  $p$  in pipeline [bar]  
y: Air release rate  $Q$  [ $\text{m}^3/\text{h}$ ]